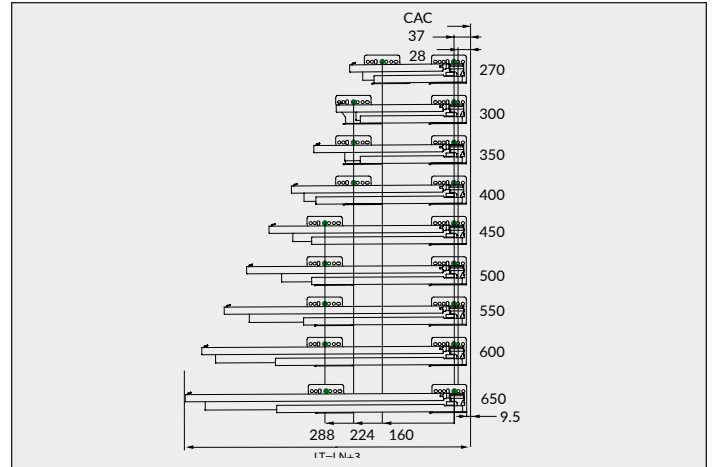
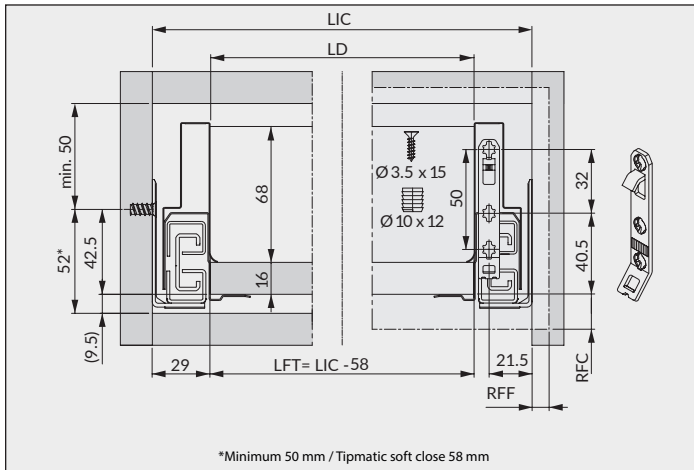


LN = Longueur nominale / nominal length  
LIC = Largeur intérieur caisson / Inside cabinet width

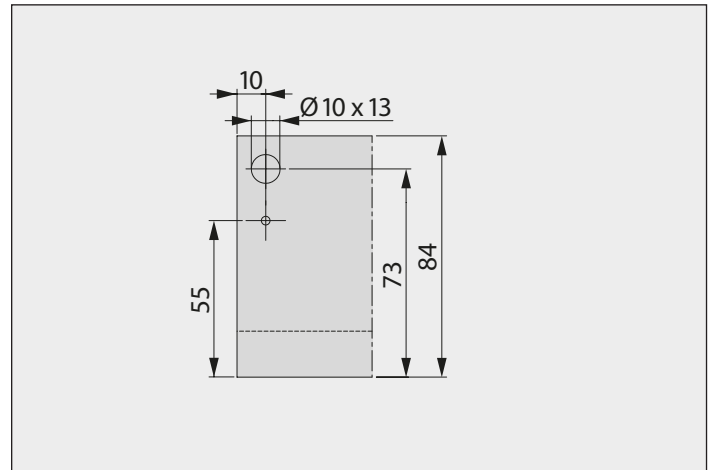


CAC = chant avant du caisson / cabinet front edge

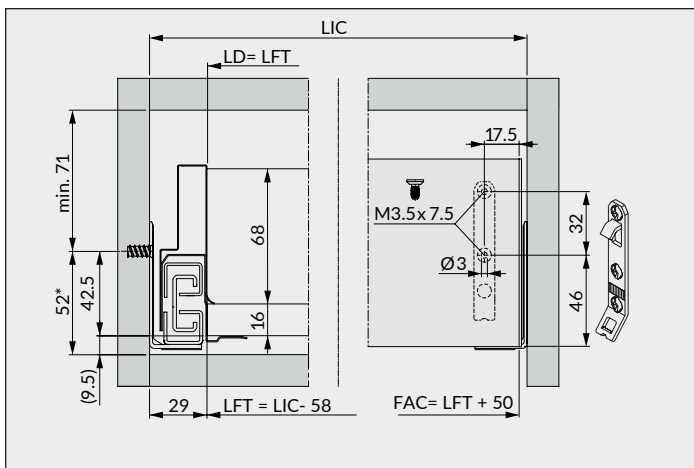


\*Minimum 50 mm / Tipmatic soft close 58 mm

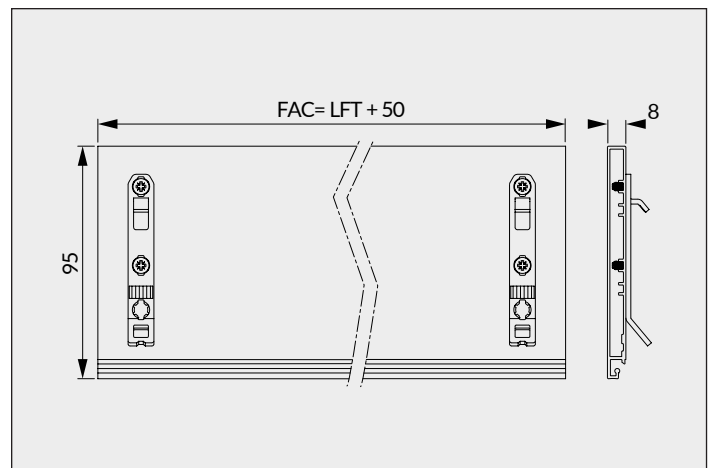
LIC = Largeur intérieure caisson / Inside cabinet width  
LFT = Largeur fond du tiroir / Inside cabinet width  
LD = Largeur du dos / Drawer back width



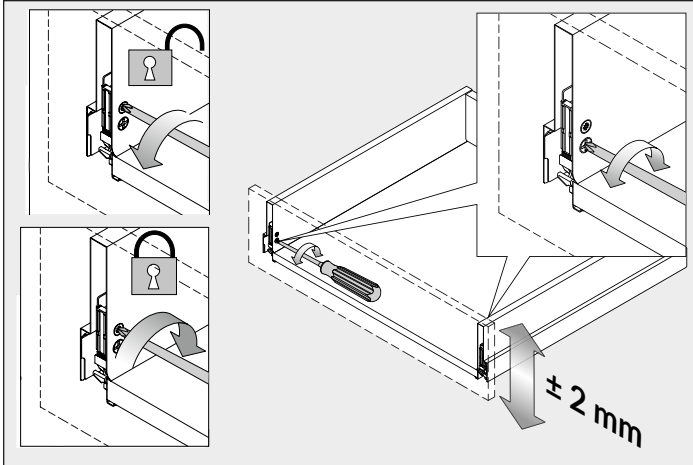
Perçage du dos / Back drilling



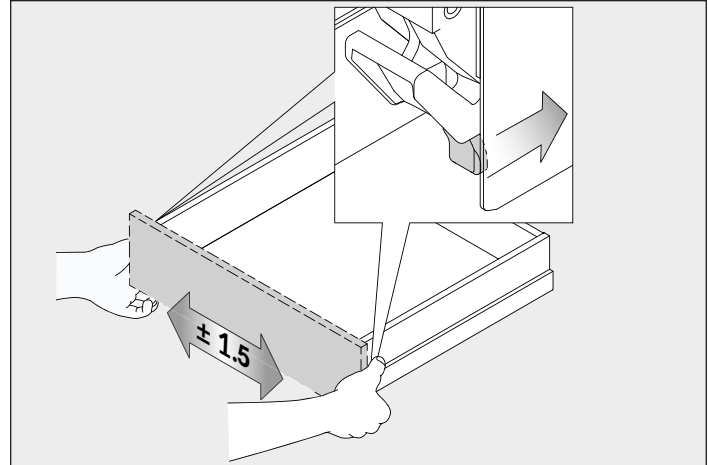
Implantation du tiroir intérieur / Inset drawer installation  
FAC = Façade d'aluminium / Aluminum drawer front



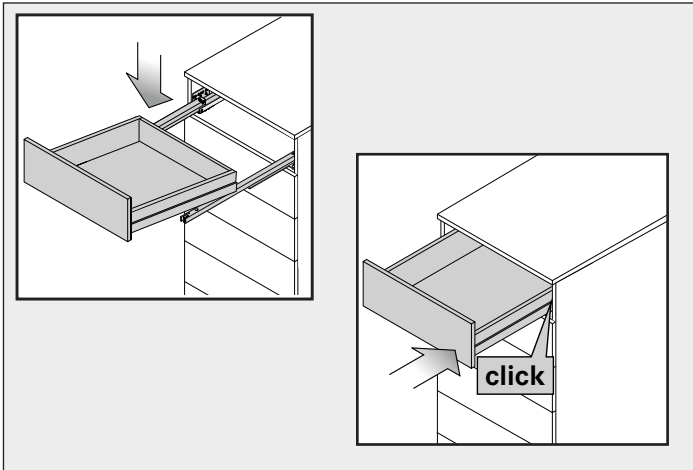
Coupe de façade sur mesure / Cut to size drawer front  
FAC = Façade d'aluminium / Aluminum drawer front



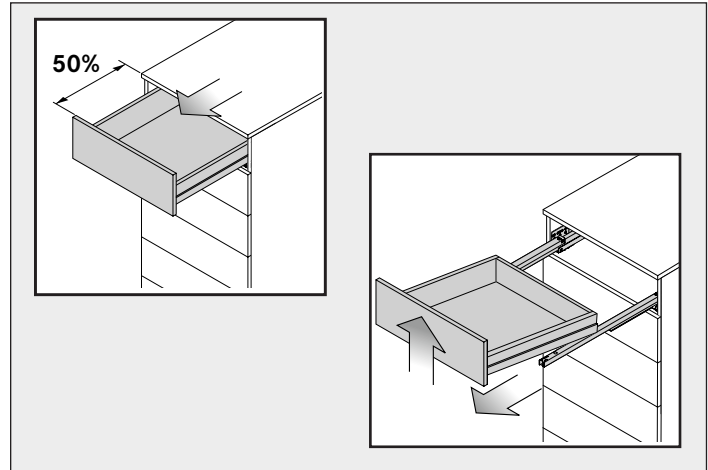
Déverrouiller pour ajuster la hauteur  
Unlock to adjust the height



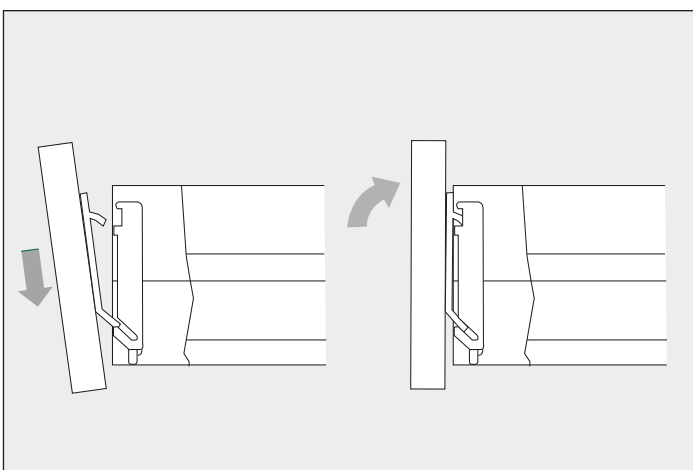
Appuyer sur les attaches pour déplacer la façade de gauche à droite  
Push on the bracket to move the drawer face from left to right.



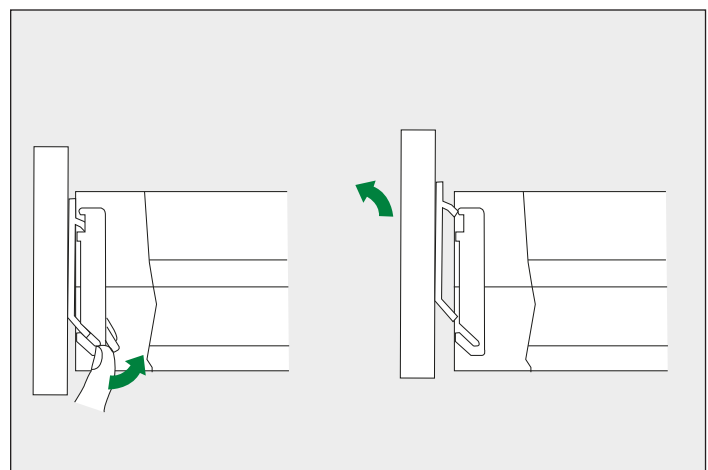
Tirer les coulisses, poser le tiroir dessus et refermer  
Extend the slides, put the drawer on them and close it.



Ouvrir le tiroir à mi-course et soulever l'avant pour l'enlever  
Open the drawer halfway, lift off the drawer to remove.



Montage de la façade sans outils  
Drawer front mounting without tools



Démontage de la façade sans outils  
Drawer front removing without tools