

- Coulisse à montage sous le tiroir
- Sortie totale et synchronisée
- Capacité de charge de 40 à 70 kg
- Réglage en hauteur intégré, + 3,5 mm, sans outil
- Réglage latéral ± 1,5 mm, sans outil
- Réglage de l'inclinaison + 4 mm, sans outil
- Compatible avec les côtés de tiroirs métalliques Vionaro

- Undermount slide
- Full extension synchronized slide
- 40 kg to 70 kg load capacity
- +3.5 mm integrated height adjustment without tools
- ±1.5 mm lateral adjustment
- +4.0 mm tilt adjustment without tools
- Vionaro metal drawer sides compatible

Avec option Tipmatic

- Ouverture par pression et fermeture amortie
- Ouverture en appuyant au centre de la façade
- Assemblage sans outil, de l'unité Tipmatic sous la coulisse (TMSC)

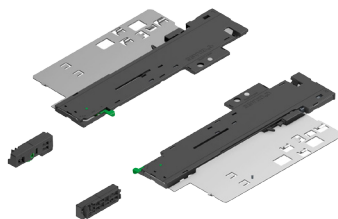
With Tipmatic option

- Touch open and soft closing
- Opens by pushing in the centre of the drawer
- No tools required to mount the Tipmatic unit under the slide.

#	Longueur nominale Nominal length		Capacité Capacity	Longueur du tiroir Drawer length
	COU-DYN-TMSC-250	250 mm	10"	40 kg
COU-DYN-TMSC-300	300 mm	12"	40 kg	290 mm
COU-DYN-TMSC-350	350 mm	14"	40 kg	340 mm
COU-DYN-TMSC-400	400 mm	16"	40 kg	390 mm
COU-DYN-TMSC-450	450 mm	18"	40 kg	440 mm
COU-DYN-TMSC-500	500 mm	20"	40 kg	490 mm
COU-DYN-TMSC-550	550 mm	22"	40 kg	540 mm
COU-DYN-TMSC-70-500	500 mm	20"	70 kg	490 mm
COU-DYN-TMSC-70-550	550 mm	22"	70 kg	540 mm
COU-DYN-TMSC-70-600	600 mm	24"	70 kg	590 mm
COU-DYN-TMSC-70-650	650 mm	26"	70 kg	640 mm
COU-DYN-TMSC-50-700	700 mm	28"	70 kg	690 mm
COU-DYN-TMSC-50-750	750 mm	30"	70 kg	740 mm

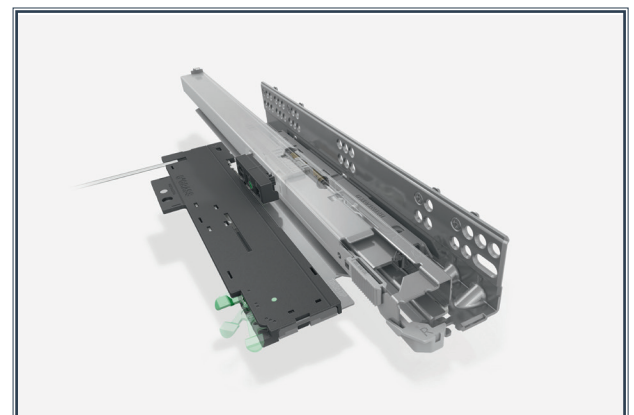
Activateur et éjecteur Tipmatic

Tipmatic ejector and activator unit



Ensemble Tipmatic, activateur et éjecteur pour Dynapro

Dynapro Tipmatic unit, ejector and activator.



COU-DYN-TIPSOFT



Barre de synchronisation pour Dynapro Tipmatic soft close à couper sur mesure, 952 mm.

Dynapro Tipmatic soft-close synchronization rod. 952 mm cut to size.

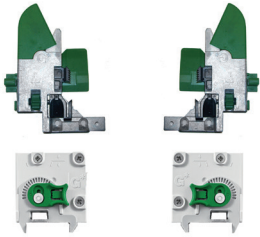
SYN-BAR DYN-TMSC



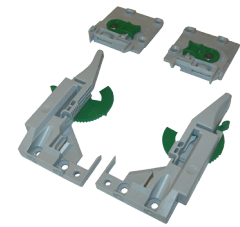
Attache Dynapro

Dynapro fixing brackets

Ensemble d'attaches; une paire d'attaches avant et une paire d'attaches de réglage arrière. Disponible en 3D et 2D, il n'y a pas d'option de réglage latéral sur l'attache 2D.

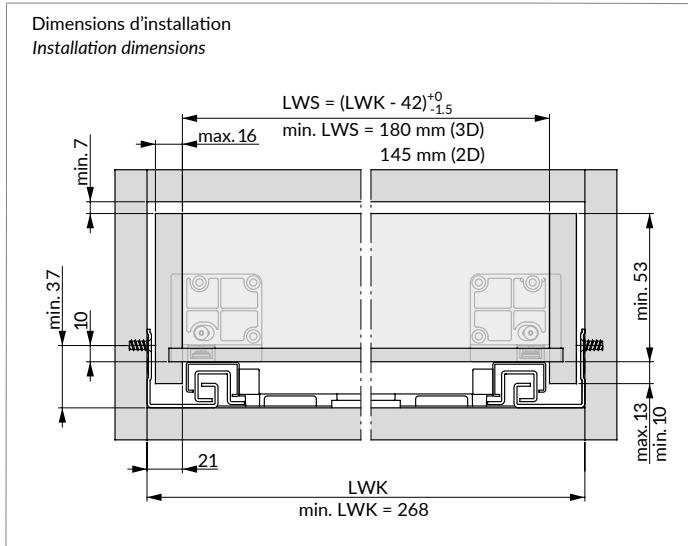


Fixing brackets set; one pair front-fixing, one pair back adjuster. Available in 3D and 2D version. The 2D option does not have the lateral adjustment.

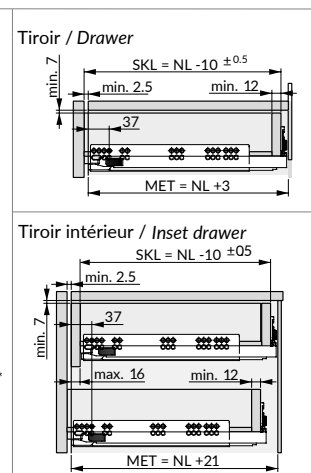
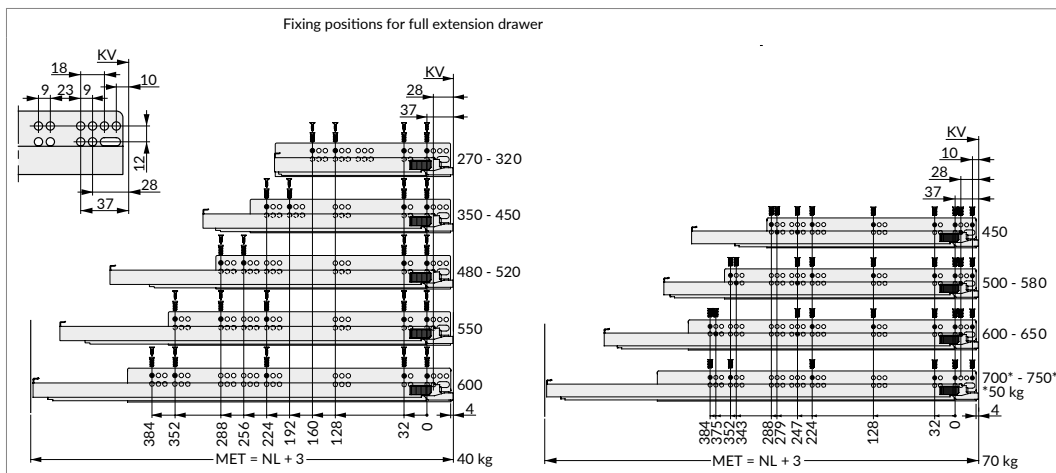
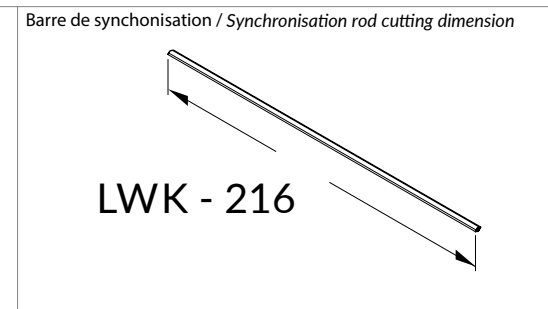
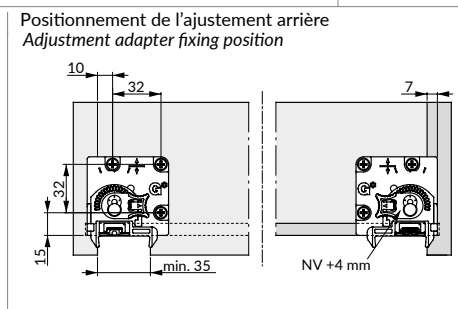
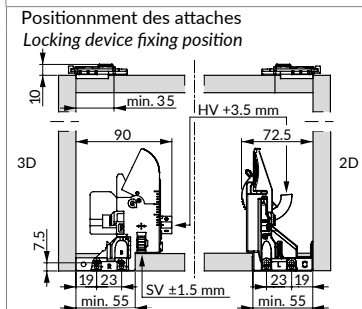


ATT-DYNAPRO OPTION 3D

ENS-ATT-DYN OPTION 2D



HV =	Réglage en hauteur <i>Height adjustment</i>	SK =	Longueur du tiroir <i>Drawer length</i>
KV =	Chant avant du caisson <i>Front edge of cabinet</i>	SV =	Réglage latéral <i>Side adjustment</i>
NL =	Longueur nominale <i>Nominal length</i>	LWS =	Largeur intérieure du tiroir <i>Clear drawer width</i>
NV =	Réglage de l'inclinaison <i>Tilt adjustment</i>	LWK =	Largeur intérieure du caisson <i>Inside cabinet width</i>
MET =		Profondeur d'installation minimum <i>Minimum installation depth</i>	

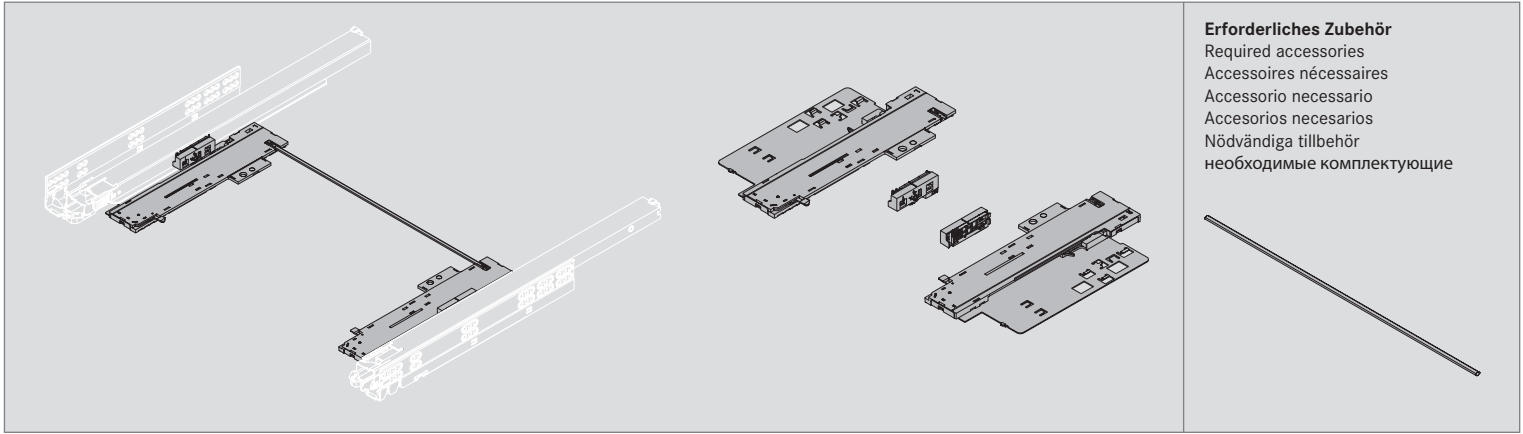


Toutes les mesures sont en millimètres.
All measurements in millimetres

DYNAPRO TIPMATIC SOFT-CLOSE

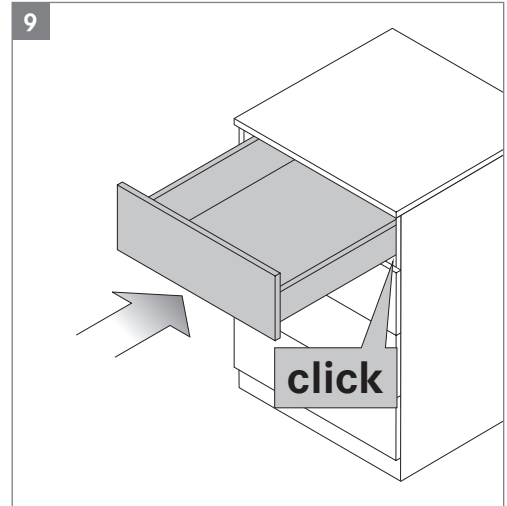
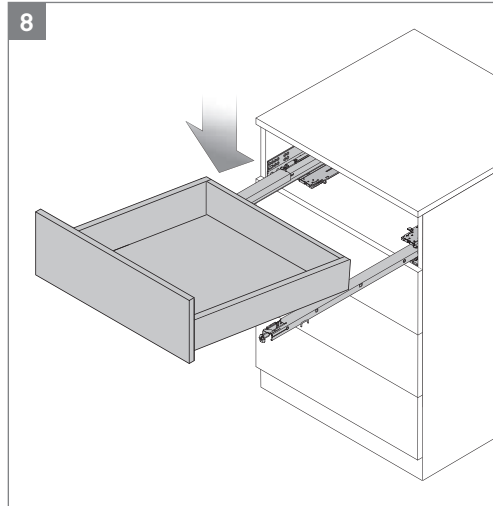
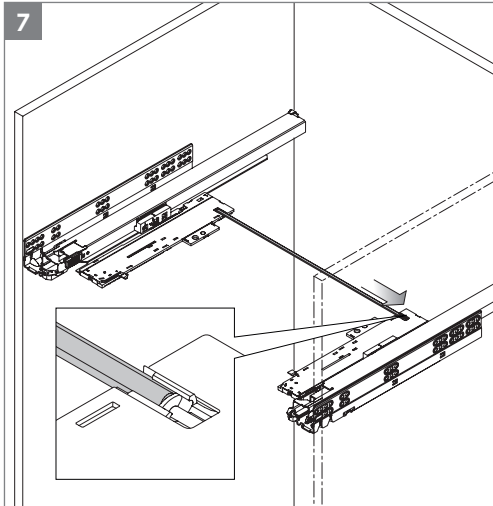
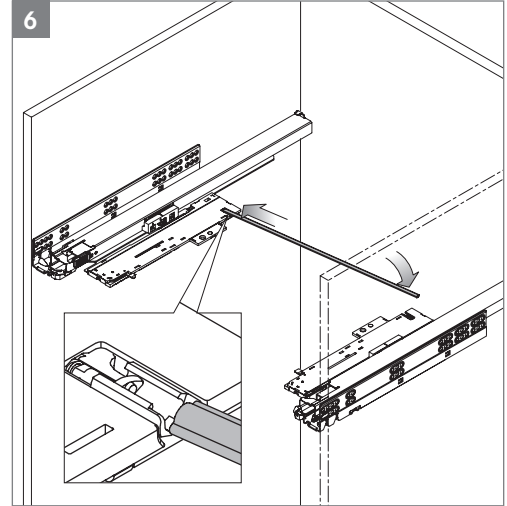
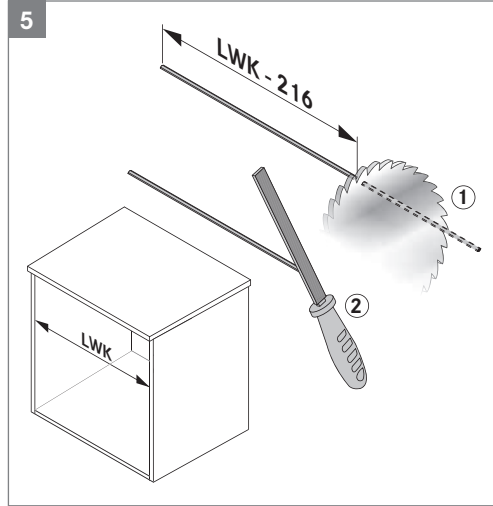
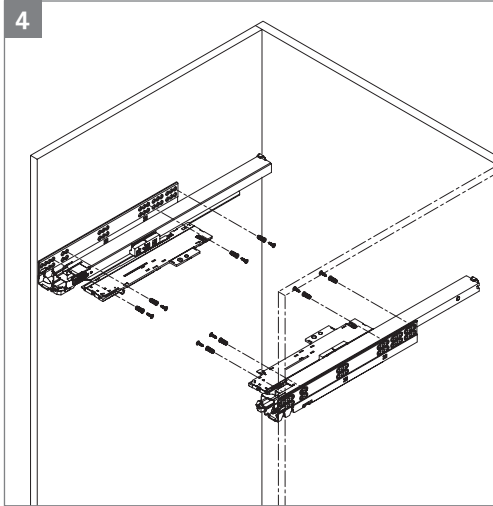
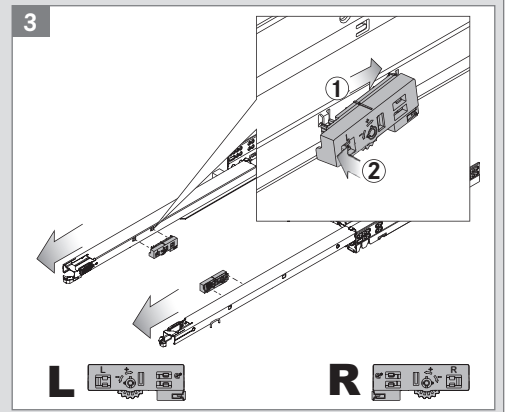
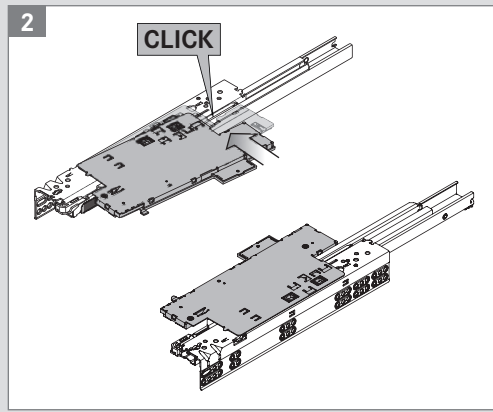
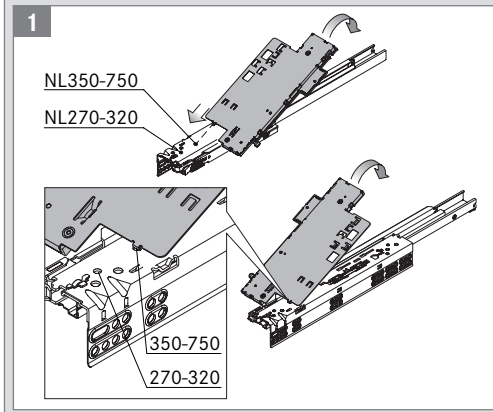
Montage/Assembly/Montage/Montaggio/Montaje/Monteringsanvisning/Монтаж

111680 - 01/2017



Erforderliches Zubehör
 Required accessories
 Accessoires nécessaires
 Accessorio necessario
 Accesorios necesarios
 Nödvändiga tillbehör
 необходимые комплектующие

Wichtiger Hinweis: Montagereihenfolge beachten! / Important note: parts must be fitted in correct order / Remarque importante: Respecter les différentes étapes de montage / Indicazione importante: seguire l'ordine di montaggio / Nota importante: las partes deben ser encajas en correcto orden / OBS! Detaljerna måste monteras i rätt ordningsföljd / Важное указание: соблюдать последовательность монтажа

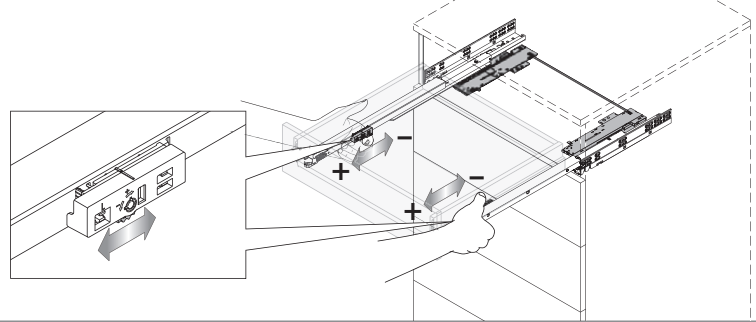
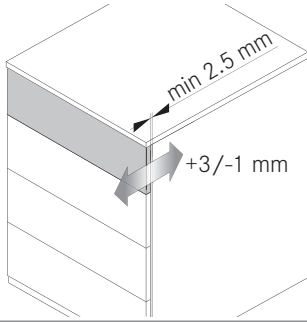


DYNAPRO TIPMATIC SOFT-CLOSE

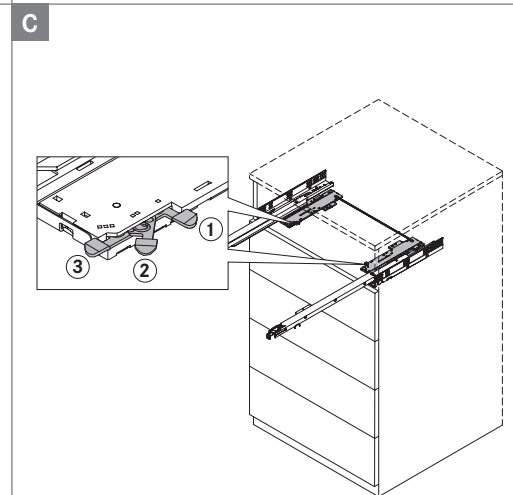
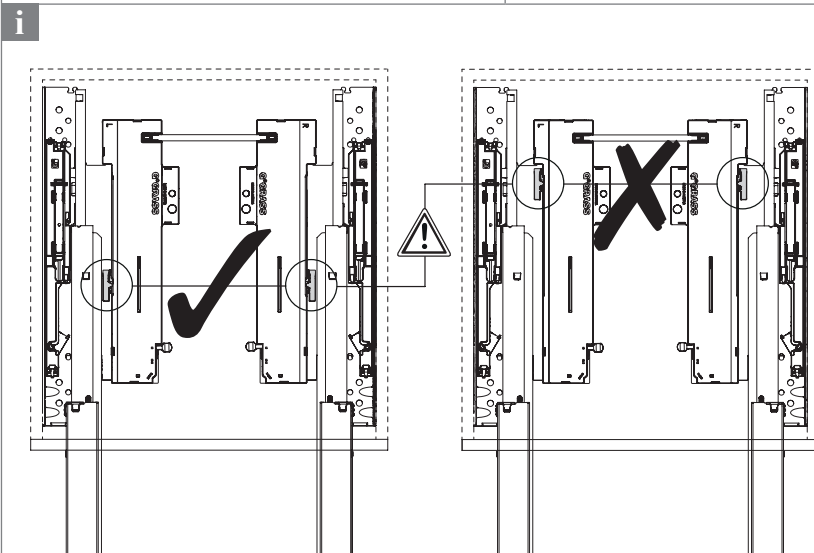
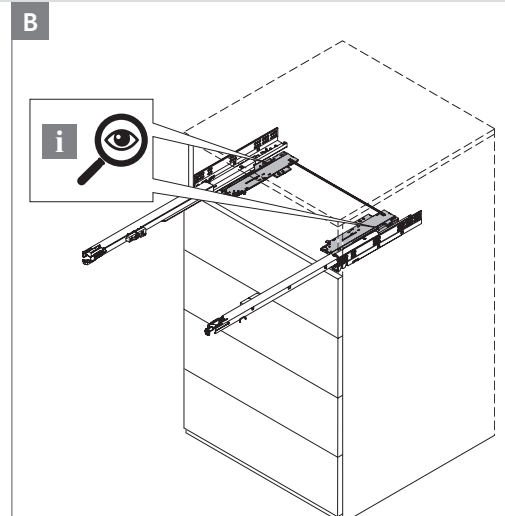
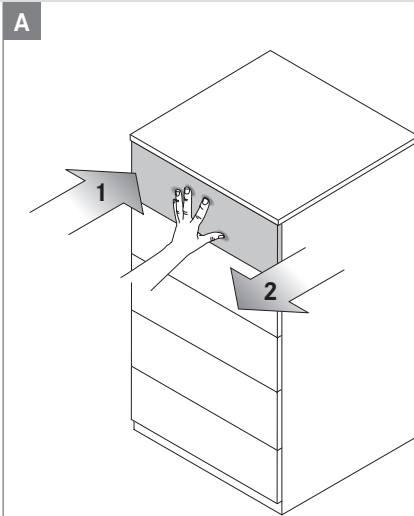
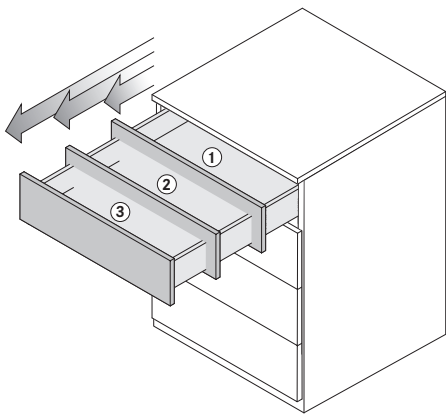
Montage/Assembly/Montage/Montaggio/Montaje/Monteringsanvisning/Монтаж

111680 - 01/2017

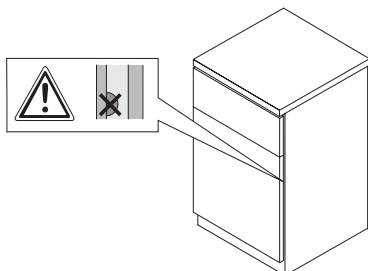
Frontspalteinstellung/Front gap adjustment/Réglage du jeu de façade/Regolazione del gioco frontale/Regulación de la fuga frontal/ Justering av front spalt/Регулировка зазора фасада



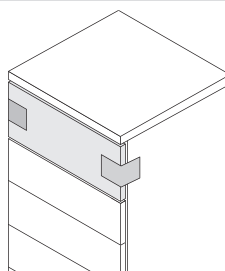
Auswurfkraft/Activation force/Force d'ouverture/Forza di sgancio/Fuerza de Activación/Öppningsimpuls/сила выталкивания



Wichtige Hinweise/Important information/Informations importantes/Avvertenze importanti/Indicaciones importantes/Viktig information/Важные примечания



Transport/Transport/Transport/Trasporto/Transporte/Transport/Транспортировка



Auslösbereich/Activation zone/Zone de déclenchement/Zona di sgancio/Zona de Activación/Öppningsområde/диапазон применения

